

COVID-19 and Age-Friendly Public Health Systems

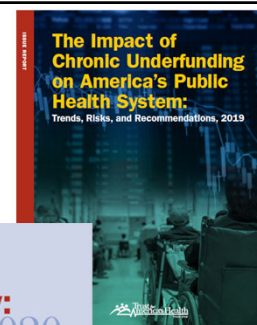
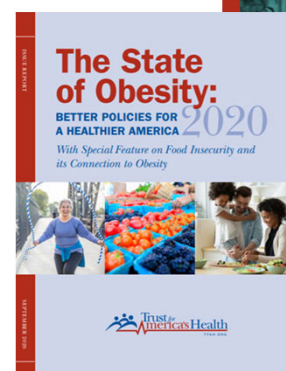
Megan Wolfe, JD
Senior Policy Development Manager



Trust for America's Health

Independent, non-partisan, public health
& prevention focus, including:

- Non-profit, non-partisan
- Evidence-based policy & advocacy
- Dedicated to improving the health of every community and making disease prevention a national priority



Presentation Objectives

- Describe the Age-Friendly Public Health Systems framework and the five categories of public health roles in healthy aging.
- Identify the connections between public health and other sectors in the COVID-19 response efforts.
- Increase understanding of the value of Age-Friendly Public Health collaboration with other sectors to improve older adult health outcomes.

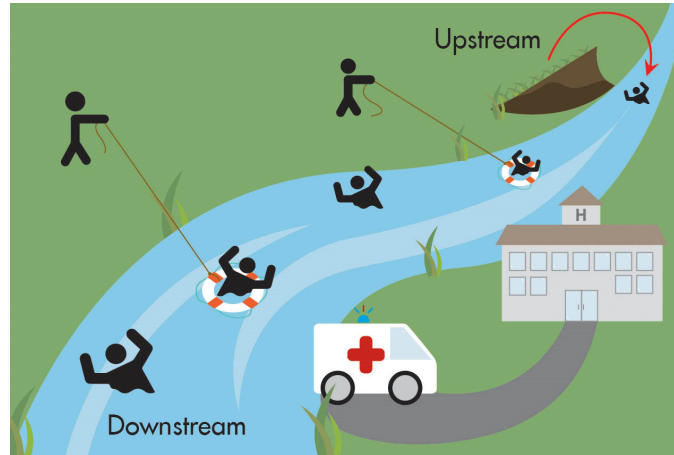
What is Public Health?

“Public health is what we, as a society, do collectively to assure the conditions in which (all) people can be healthy.”

Institute of Medicine (1988),
Future of Public Health



Public Health is “Upstream”



Roles of Public Health (policy, systems, environmental change)

- ❑ Gathering and analyzing data
- ❑ Building systems of care and support
- ❑ Deploying strategies of disease prevention and control
- ❑ Establishing model policies
- ❑ Demonstrating viability of new approaches
- ❑ Disseminating information and health education
- ❑ Convening allies and partners in dialogue and collaborative initiatives
- ❑ Community engagement
- ❑ Safety net and gap-filling services

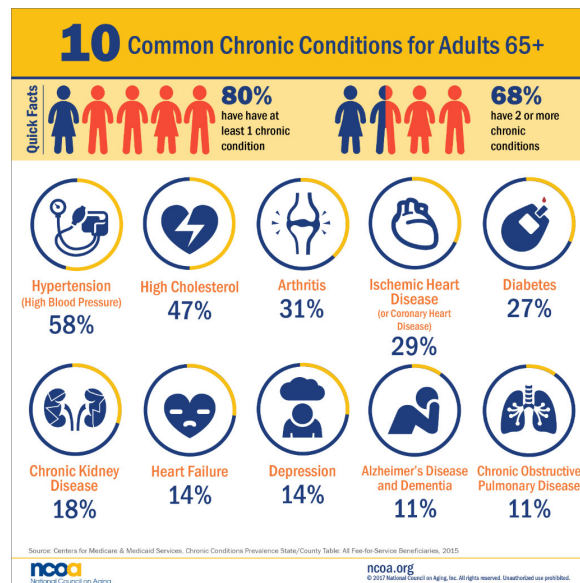


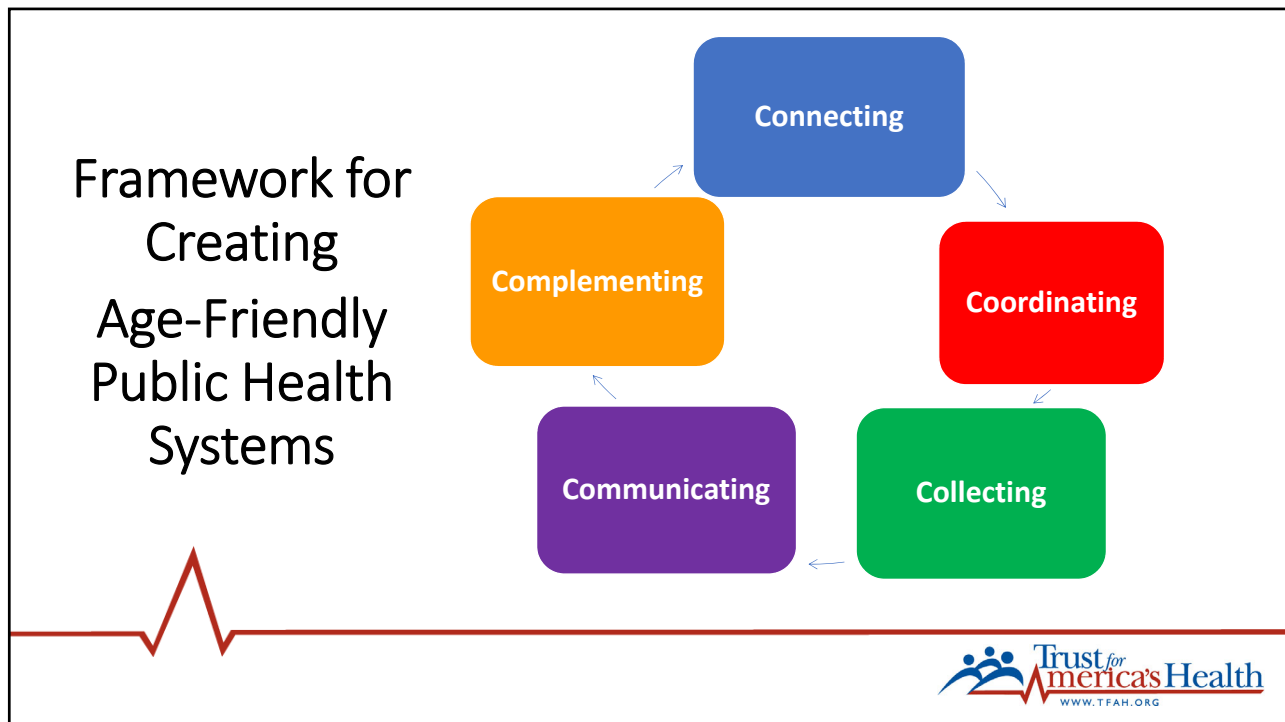
Public Health's Focus on Older Adults

- Federal: No CDC healthy aging unit
- State/local: Lack of funding and expertise
- Current PH aging work is limited: falls prevention, vaccinations, dementias



Prevalence of Preventable Chronic Diseases

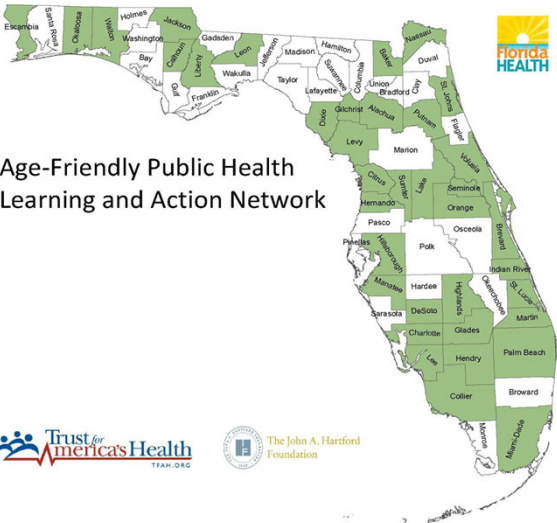







TFAH'S AFPHS Florida Pilot


- FL Depts. of Health & Elder Affairs
- 37 counties – 2/3 of state population
- Policy, systems, environmental changes (data, collaborations, emergency prep, programs)
- Links to AARP Age-Friendly network, Dementia Friendly Communities, AFHS

Age-Friendly Public Health Learning and Action Network





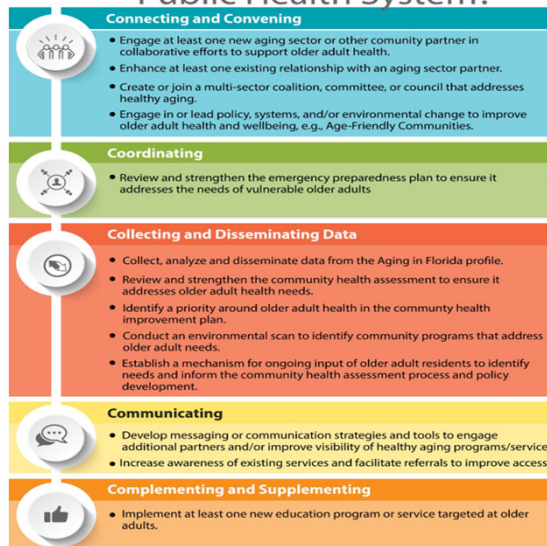





 WWW.TFAH.ORG

Framework for Creating Age-Friendly Public Health Systems

5 What are the Cs of an Age-Friendly Public Health System?



Older Adults and COVID-19

- 8 out of 10 COVID deaths are in people 65 and older
- 50% of deaths occur in long-term care facilities
- Greater vulnerability due to multiple chronic health conditions
- Congregate settings increase risk



Public Health's Focus on Older Adults During COVID-19



- Communications
- Data tracking, analysis
- Contact tracing
- Nursing home safety
- Social isolation
- Support for aging services



Engaging with and supporting other sectors during COVID-19

Florida -- Seminole County Health Department:

- Engagement with aging sector through AFPHS Learning and Action Network
- Messaging and communication efficiency
- Capture information on older adult needs
- Assist with meal delivery, social isolation



Engaging with and supporting other sectors during COVID-19

Florida -- Nassau County Health Department:

- Engagement with faith-based community organizations through AFPHS Network
- Became trusted partner and source of information
- Able to quickly share hygiene and testing information and resources



Engaging with and supporting other sectors during COVID-19

Public Health in Seattle-King County:

- Assigned to address C19 in LTC facilities
- Data dashboard
- Increased testing (EMS, CHW, college and univ volunteers)

COVID-19 Data Dashboards



Daily Summary Dashboard

UPDATED DAILY, 3:00-5:00 PM

This data dashboard shows total cases, deaths and demographics.



Key indicators of COVID-19 activity

UPDATED ON WEDNESDAYS

This dashboard displays data on key indicators that track COVID-19 activity.



Economic, Social and Overall Health Impacts Dashboard

UPDATED WEEKLY

This dashboard shows changes in key economic, social, and other health indicators resulting from strategies to slow the spread of COVID-19.



AFPHS Collaboration Can Improve Older Adult Health Outcomes

- **Change the “social determinants”:** Join transportation, housing, public safety, etc. efforts to adopt health/well-being policies
- **Social isolation:** Create programs to promote meaningful connections
- **Home/community focus:** Develop home-neighborhood programs
- **Strengthen Partnerships:** Engage and align with Age-Friendly Communities, Age-Friendly Health Systems
- **Promote equity:** Reach sub-populations with limited resources and improve access to needed services



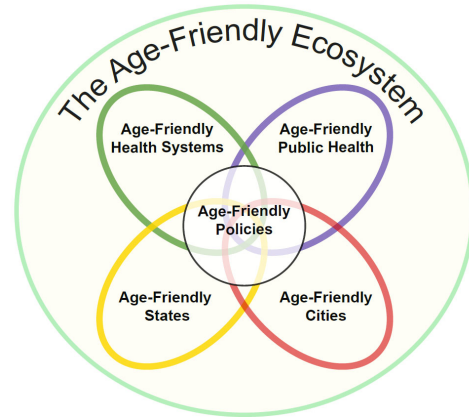
Age-Friendly Recognition Program PUBLIC HEALTH SYSTEMS

- Incentivize EVERY state & local health dept. to address older adult health
- Build capacity through guidance and training
- Develop learning network within/across states



Value of Becoming an AFPHS

- Implementation within current resources
- Build expertise and competency in aging
- Leverage public and private funding
- Opportunity to better serve all populations



The
John A. Hartford
Foundation



THANK YOU!

Megan Wolfe
mwolfe@tfah.org

Age-Friendly 
PUBLIC HEALTH SYSTEMS

