



MATH 2020



POSITIVE z Scores

TABLE A-2 (continued) Cumulative Area from the LEFT

z	.00	.01	.02	.03	.04	.05	.06	.07	.08	.09
0.0	.5000	.5040	.5080	.5120	.5160	.5199	.5239	.5279	.5319	.5359
0.1	.5398	.5438	.5478	.5517	.5557	.5596	.5636	.5675	.5714	.5753
0.2	.5793	.5832	.5871	.5910	.5948	.5987	.6026	.6064	.6103	.6141
0.3	.6179	.6217	.6255	.6293	.6331	.6368	.6406	.6443	.6480	.6517
0.4	.6554	.6591	.6628	.6664	.6700	.6736	.6772	.6808	.6844	.6879
0.5	.6915	.6950	.6985	.7019	.7054	.7088	.7123	.7157	.7190	.7224
0.6	.7257	.7291	.7324	.7357	.7389	.7422	.7454	.7486	.7517	.7548
0.7	.7580	.7611	.7642	.7673	.7704	.7734	.7764	.7794	.7823	.7852
0.8	.7881	.7910	.7939	.7967	.7995	.8023	.8051	.8078	.8105	.8133
0.9	.8159	.8186	.8212	.8238	.8264	.8289	.8315	.8340	.8365	.8389
1.0	.8413	.8438	.8461	.8485	.8508	.8531	.8554	.8577	.8599	.8621
1.1	.8643	.8665	.8686	.8706	.8729	.8749	.8770	.8790	.8810	.8830
1.2	.8848	.8868	.8888	.8907	.8925	.8944	.8962	.8980	.8997	.9015
1.3	.9032	.9049	.9066	.9082	.9099	.9115	.9131	.9147	.9162	.9177
1.4	.9192	.9207	.9222	.9236	.9251	.9265	.9279	.9292	.9306	.9319
1.5	.9332	.9345	.9357	.9370	.9382	.9394	.9406	.9418	.9429	.9441
1.6	.9452	.9463	.9474	.9484	.9495	.9505	.9515	.9525	.9535	.9545
1.7	.9554	.9564	.9573	.9582	.9591	.9599	.9608	.9616	.9625	.9633
1.8	.9641	.9649	.9656	.9664	.9671	.9678	.9686	.9693	.9699	.9706
1.9	.9713	.9719	.9726	.9732	.9738	.9744	.9750	.9756	.9761	.9767
2.0	.9772	.9778	.9783	.9788	.9793	.9798	.9803	.9808	.9812	.9817
2.1	.9821	.9826	.9830	.9834	.9838	.9842	.9846	.9850	.9854	.9857
2.2	.9861	.9864	.9868	.9871	.9875	.9878	.9881	.9884	.9887	.9890
2.3	.9893	.9896	.9898	.9901	.9904	.9906	.9909	.9911	.9913	.9916
2.4	.9918	.9920	.9922	.9925	.9927	.9929	.9931	.9932	.9934	.9936
2.5	.9936	.9940	.9941	.9943	.9945	.9948	.9948	.9949	.9951	.9952
2.6	.9953	.9955	.9956	.9957	.9959	.9960	.9961	.9962	.9963	.9964
2.7	.9965	.9966	.9967	.9968	.9969	.9970	.9971	.9972	.9973	.9974
2.8	.9974	.9975	.9976	.9977	.9977	.9978	.9979	.9979	.9980	.9981
2.9	.9981	.9982	.9982	.9983	.9984	.9984	.9985	.9985	.9986	.9986
3.0	.9987	.9987	.9987	.9988	.9988	.9989	.9989	.9989	.9990	.9990
3.1	.9990	.9991	.9991	.9991	.9992	.9992	.9992	.9992	.9993	.9993
3.2	.9993	.9993	.9994	.9994	.9994	.9994	.9994	.9995	.9995	.9995
3.3	.9995	.9995	.9995	.9996	.9996	.9996	.9996	.9996	.9996	.9997
3.4	.9997	.9997	.9997	.9997	.9997	.9997	.9997	.9997	.9997	.9998
3.50 and up	.9999									

NOTE For values of z above 3.49, use 0.9999 for the area.
*Use these common values that result from interpolation:

z score	Area
1.645	0.9500
2.575	0.9950

Common Critical Values	
Confidence Level	Critical Value
0.90	1.645
0.95	1.96
0.99	2.575



MATH 2020

NEGATIVE z Scores

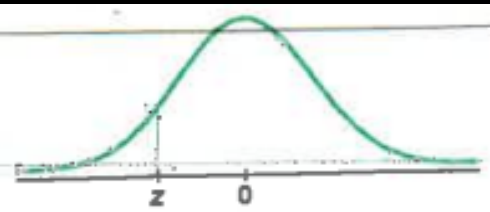


TABLE A-2 Standard Normal (z) Distribution: Cumulative Area from the LEFT

z	.00	.01	.02	.03	.04	.05	.06	.07	.08	.09
-3.60 and lower	.0001									.0022
-3.4	.0003	.0003	.0003	.0003	.0003	.0003	.0003	.0003	.0003	.0003
-3.3	.0005	.0005	.0005	.0004	.0004	.0004	.0004	.0004	.0004	.0003
-3.2	.0007	.0007	.0006	.0006	.0005	.0005	.0005	.0005	.0005	.0004
-3.1	.0010	.0009	.0009	.0008	.0008	.0008	.0008	.0008	.0007	.0007
-3.0	.0013	.0013	.0013	.0012	.0012	.0011	.0011	.0011	.0010	.0010
-2.9	.0016	.0016	.0015	.0015	.0014	.0014	.0014	.0014	.0013	.0013
-2.8	.0020	.0019	.0019	.0018	.0018	.0017	.0017	.0017	.0016	.0016
-2.7	.0025	.0024	.0024	.0023	.0023	.0022	.0022	.0022	.0021	.0021
-2.6	.0030	.0029	.0029	.0028	.0028	.0027	.0027	.0027	.0026	.0026
-2.5	.0035	.0034	.0034	.0033	.0033	.0032	.0032	.0032	.0031	.0031
-2.4	.0040	.0039	.0039	.0038	.0038	.0037	.0037	.0037	.0036	.0036
-2.3	.0045	.0044	.0044	.0043	.0043	.0042	.0042	.0042	.0041	.0041
-2.2	.0050	.0049	.0049	.0048	.0048	.0047	.0047	.0047	.0046	.0046
-2.1	.0054	.0054	.0053	.0053	.0052	.0052	.0052	.0052	.0051	.0051
-2.0	.0059	.0058	.0058	.0057	.0057	.0056	.0056	.0056	.0055	.0055
-1.9	.0064	.0063	.0063	.0062	.0062	.0061	.0061	.0061	.0060	.0060
-1.8	.0069	.0068	.0068	.0067	.0067	.0066	.0066	.0066	.0065	.0065
-1.7	.0074	.0073	.0073	.0072	.0072	.0071	.0071	.0071	.0070	.0070
-1.6	.0078	.0077	.0077	.0076	.0076	.0075	.0075	.0075	.0074	.0074
-1.5	.0082	.0081	.0081	.0080	.0080	.0079	.0079	.0079	.0078	.0078
-1.4	.0086	.0085	.0085	.0084	.0084	.0083	.0083	.0083	.0082	.0082
-1.3	.0090	.0089	.0089	.0088	.0088	.0087	.0087	.0087	.0086	.0086
-1.2	.0094	.0093	.0093	.0092	.0092	.0091	.0091	.0091	.0090	.0090
-1.1	.0098	.0097	.0097	.0096	.0096	.0095	.0095	.0095	.0094	.0094
-1.0	.0101	.0101	.0100	.0100	.0100	.0099	.0099	.0099	.0098	.0098
-0.9	.0104	.0104	.0103	.0103	.0103	.0102	.0102	.0102	.0101	.0101
-0.8	.0107	.0107	.0106	.0106	.0106	.0105	.0105	.0105	.0104	.0104
-0.7	.0110	.0110	.0109	.0109	.0109	.0108	.0108	.0108	.0107	.0107
-0.6	.0113	.0113	.0112	.0112	.0112	.0111	.0111	.0111	.0110	.0110
-0.5	.0116	.0116	.0115	.0115	.0115	.0114	.0114	.0114	.0113	.0113
-0.4	.0119	.0119	.0118	.0118	.0118	.0117	.0117	.0117	.0116	.0116
-0.3	.0122	.0122	.0121	.0121	.0121	.0120	.0120	.0120	.0119	.0119
-0.2	.0125	.0125	.0124	.0124	.0124	.0123	.0123	.0123	.0122	.0122
-0.1	.0128	.0128	.0127	.0127	.0127	.0126	.0126	.0126	.0125	.0125
-0.0	.0131	.0131	.0130	.0130	.0130	.0129	.0129	.0129	.0128	.0128

NOTE: For values of z below -3.49, use 0.0001 for the area.
*Use these common values that result from interpolation:

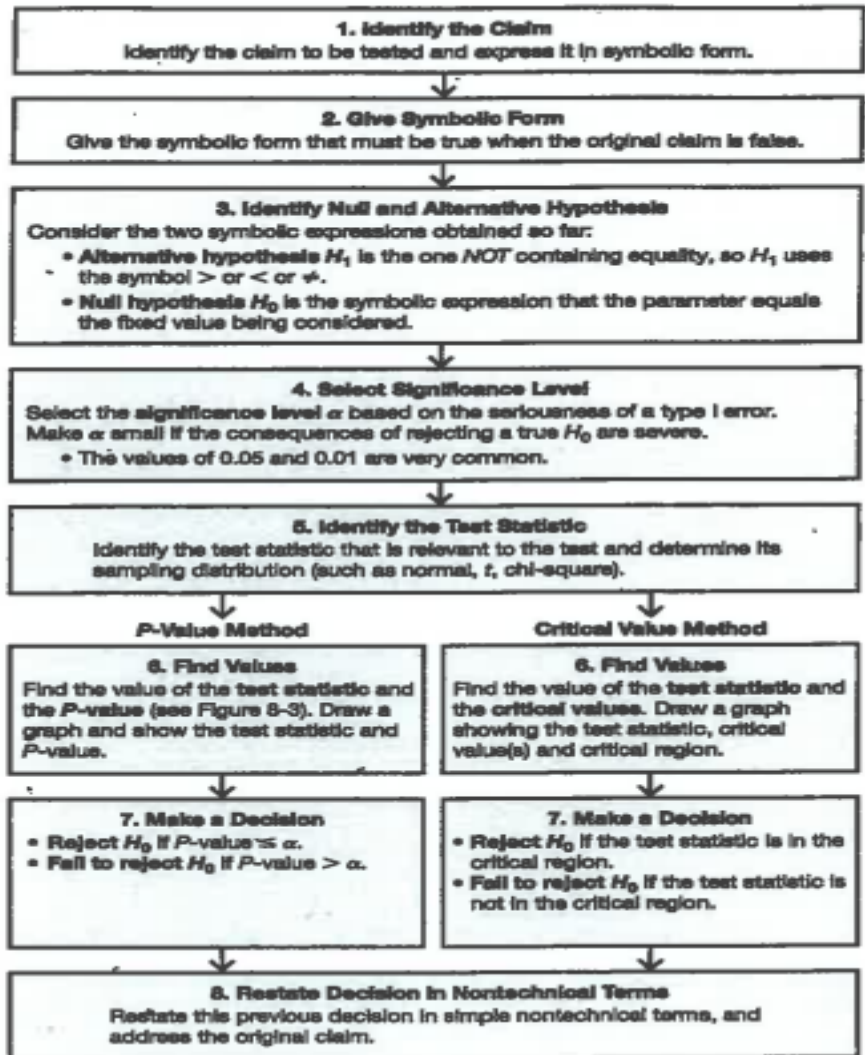
z Score	Area
-1.645	0.0500
-2.575	0.0050

(continued)

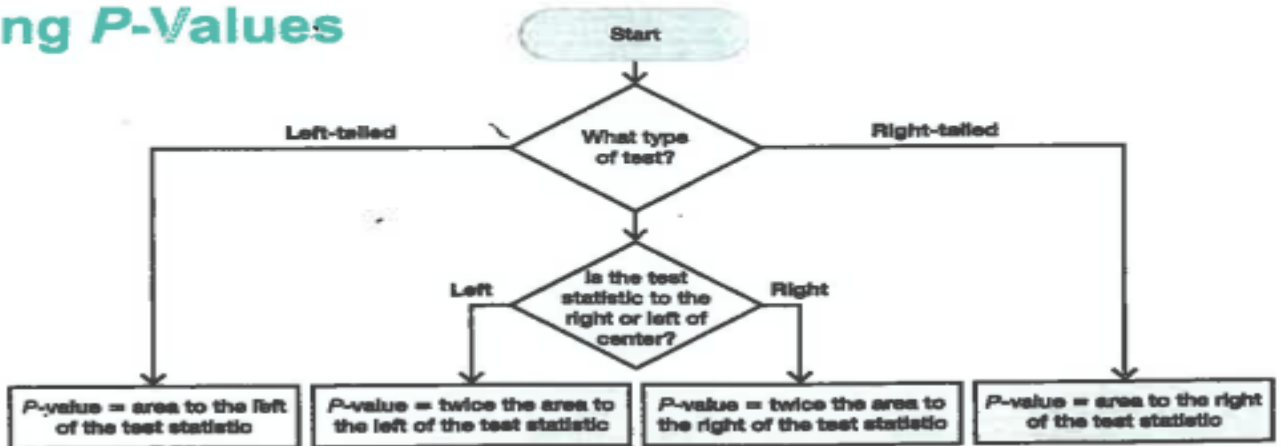


MATH 2020

Procedure for Hypothesis Tests



Finding P-Values



Contact us via:

- 📍 Student Affairs Building, 2nd floor
- ☎ (954) 262-8350
- 📧 @nsu_ttc

Maximize your Success

